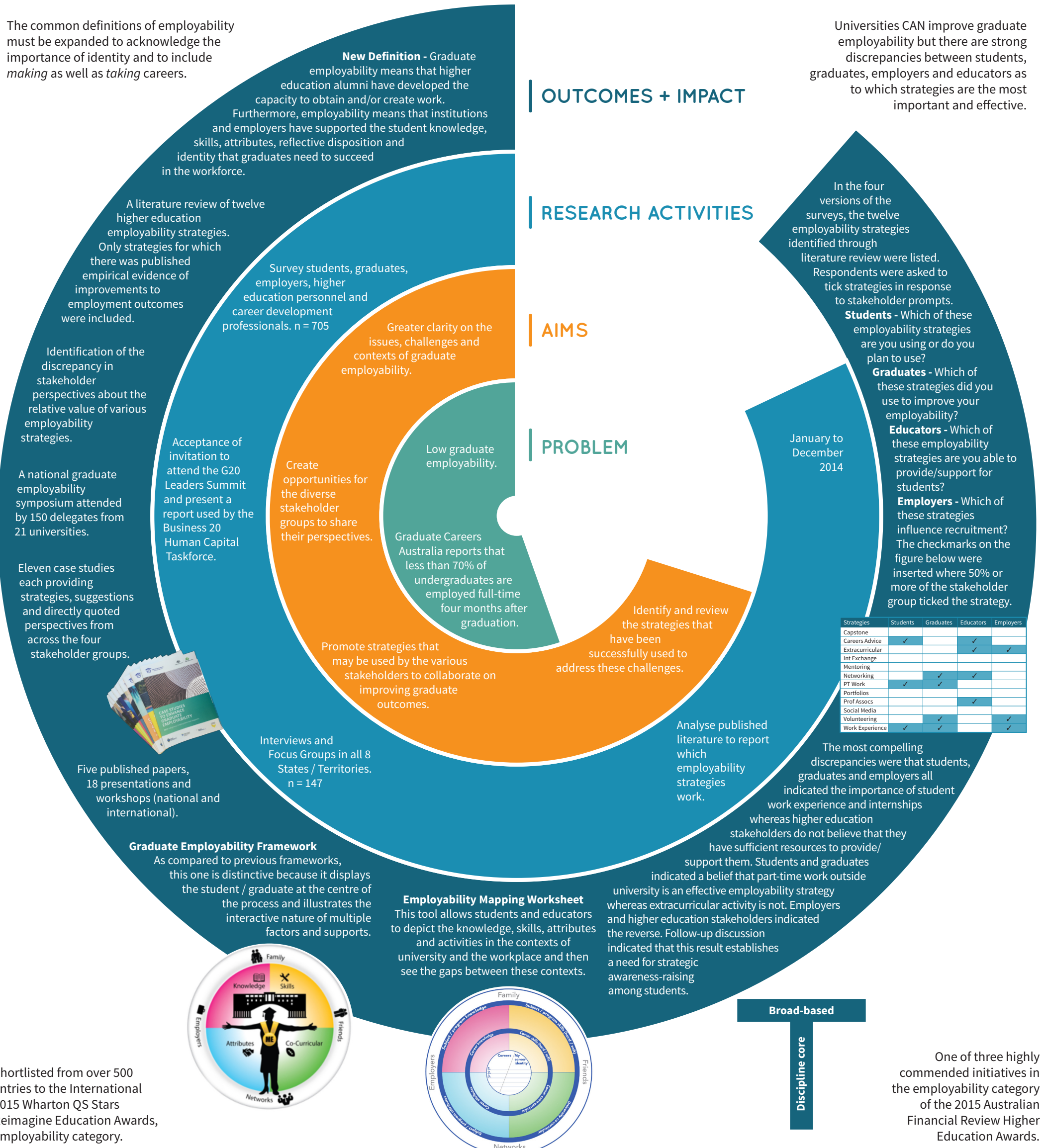


# SUPPORTING GRADUATE EMPLOYABILITY FROM GENERALIST DISCIPLINES THROUGH EMPLOYER AND PRIVATE INSTITUTION COLLABORATION

The common definitions of employability must be expanded to acknowledge the importance of identity and to include *making* as well as *taking* careers.

Universities CAN improve graduate employability but there are strong discrepancies between students, graduates, employers and educators as to which strategies are the most important and effective.



Graduates have heightened employability when their student experiences represent both a strong disciplinary knowledge and broad-based experiences such as through extracurricular activities including student societies, volunteer work and sport.

Associate Professor Shelley Kinash [skinash@bond.edu.au](mailto:skinash@bond.edu.au)

Associate Professor Linda Crane [lcrane@bond.edu.au](mailto:lcrane@bond.edu.au)

Madelaine-Marie Judd [mjudd@bond.edu.au](mailto:mjudd@bond.edu.au)